

# INKE111AC1

Zener Diode built-in  
Silicon N-channel MOSFET

## DESCRIPTION

INKE111AC1 is a Silicon N-channel MOSFET built-in zener diode between drain and source.

## FEATURE

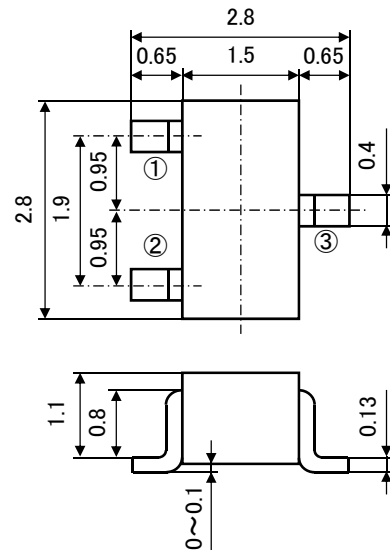
- Low on Resistance.  
 $R_{DS(ON)}=0.8\ \Omega$  (TYP) @ $I_D=500\text{mA}$ ,  $V_{GS}=4.0\text{V}$   
 $R_{DS(ON)}=0.6\ \Omega$  (TYP) @ $I_D=500\text{mA}$ ,  $V_{GS}=10\text{V}$
- High speed switching.
- Drive voltage 4V
- Built-in zener diode between drain and source.
- Small package for easy mounting.

## APPLICATION

Switching

## OUTLINE DRAWING

UNIT: mm



TERMINAL CONNECTER

- ①: GATE  
②: SOURCE  
③: DRAIN

JEITA: SC-59

JEDEC: Similar to TO-236

## MAXIMUM RATING (Ta=25°C)

Symbol	Parameter	Rating	Unit
VGSS	Gate-Source Voltage	±20	V
ID	Drain Current (DC)	0.5	A
IDP	Drain Current (Pulse) <sup>※1</sup>	1.5	A
PD	Total power Dissipation	200	mW
		300 <sup>※2</sup>	mW
IAV	Avalanche Current <sup>※3, 4</sup>	1.0	A
EAV	Avalanche Energy <sup>※3, 4</sup>	0.06	mJ
Tch	Channel Temperature	+150	°C
Tstg	Storage Temperature	-55~+150	°C

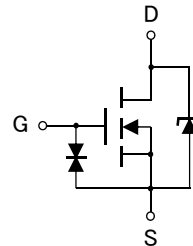
※1:  $PW \leq 1\text{ms}$ , Duty  $\leq 1\%$

※2: Package mounted on glass-epoxy substrate (19mm × 9mm × 1mm)

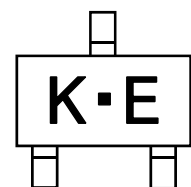
※3: Consecutive pulses  $PW \leq 20\ \mu\text{s}$ , Duty  $\leq 0.2\%$

※4: L=100uH

## EQUIVALENT CIRCUIT



## MARKING



## [MOSFET] ELECTRICAL CHARACTERISTICS (Ta=25°C)

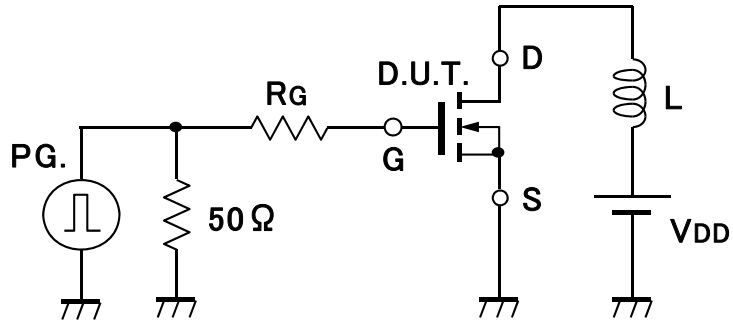
記号	Parameter	Test Condition	Limit			Unit
			MIN	TYP	MAX	
V(BR)DSS	Drain-Source Breakdown Voltage	$I_D=100\ \mu\text{A}$ , $V_{GS}=0\text{V}$	40	-	60	V
IGSS	Gate-Source Leak current	$V_{GS}=\pm 20\text{V}$ , $V_{DS}=0\text{V}$	-	-	±10	μA
IDSS	Zero Gate Voltage Drain Current	$V_{DS}=40\text{V}$ , $V_{GS}=0\text{V}$	-	-	1	μA
Vth	Gate Threshold Voltage	$I_D=250\ \mu\text{A}$ , $V_{DS}=V_{GS}$	1.0	-	2.0	V
Yfs	Forward Transfer Admittance	$V_{DS}=5\text{V}$ , $I_D=200\text{mA}$	-	680	-	mS
RDS(ON)	Static Drain-Source On-State Resistance	$I_D=500\text{mA}$ , $V_{GS}=4.0\text{V}$	-	0.8	-	Ω
		$I_D=500\text{mA}$ , $V_{GS}=10\text{V}$	-	0.6	-	
Ciss	Input Capacitance	$V_{DS}=5\text{V}$ , $V_{GS}=0\text{V}$ , $f=1\text{MHz}$	-	60	-	pF
Coss	Output Capacitance		-	15	-	
ton	Switching Time	$V_{DD}=5\text{V}$ , $I_D=200\text{mA}$ $V_{GS}=0\sim 5\text{V}$	-	21	-	ns
toff			-	23	-	

**[Zener Diode] ELECTRICAL CHARACTERISTICS (Ta=25°C)**

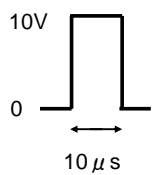
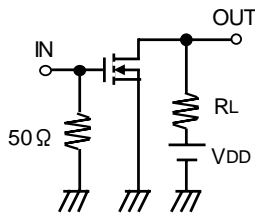
Zener Voltage Vz(V)			Reverse current IR(μA)	
MIN	MAX	Iz(mA)	MAX	VR(V)
40	60	0.1	1.0	40

**Avalanche current test condition**

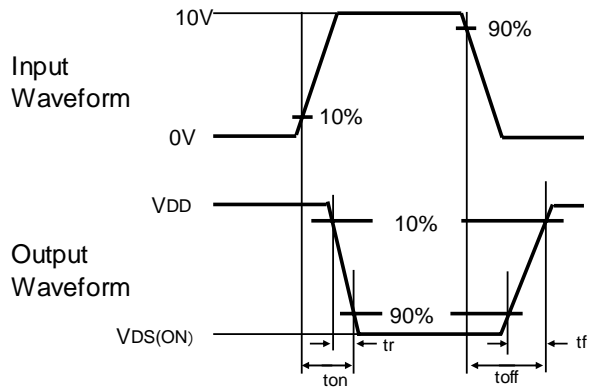
Ta=25°C  
RG=25Ω  
VDD=20V  
VGS=10→0V  
L=100uH



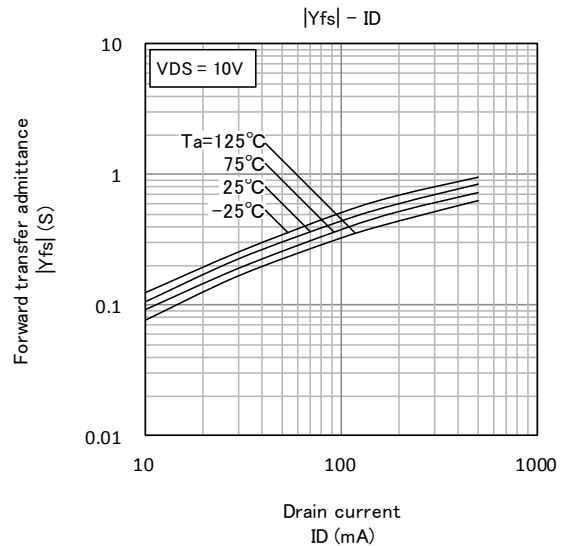
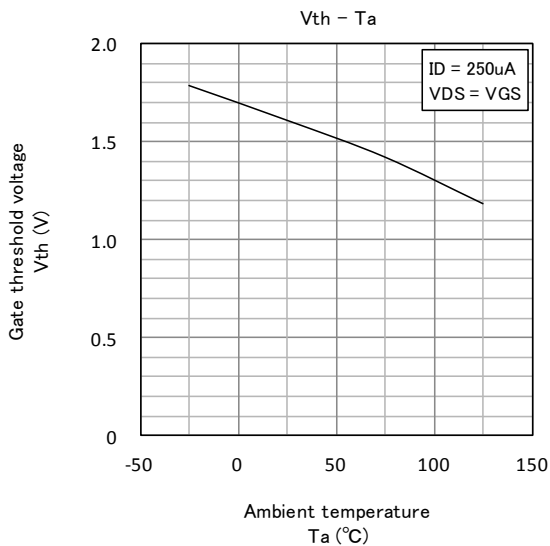
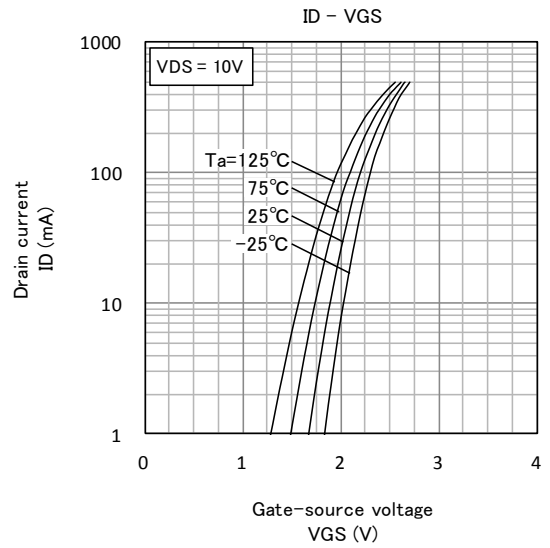
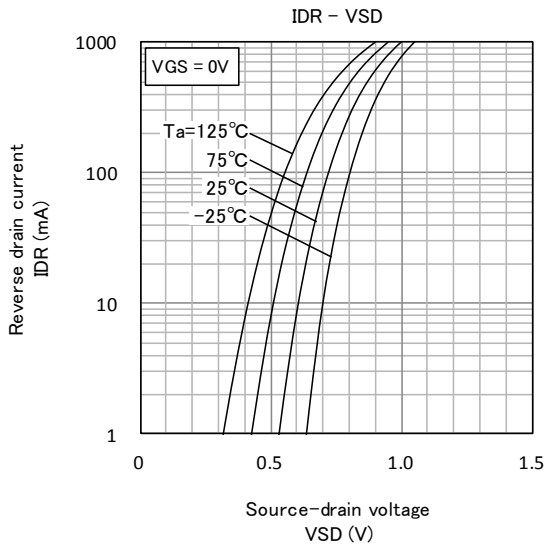
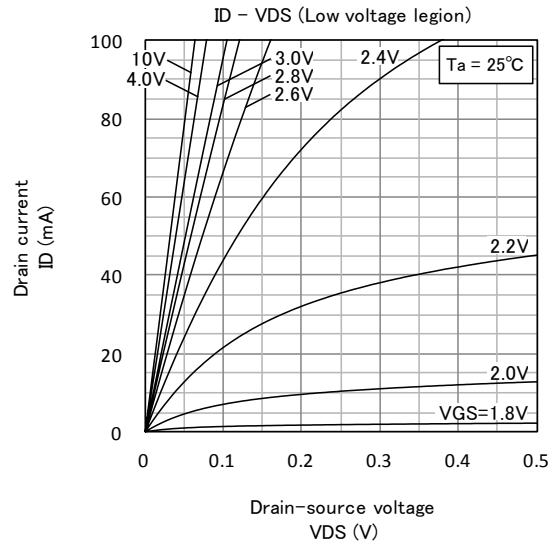
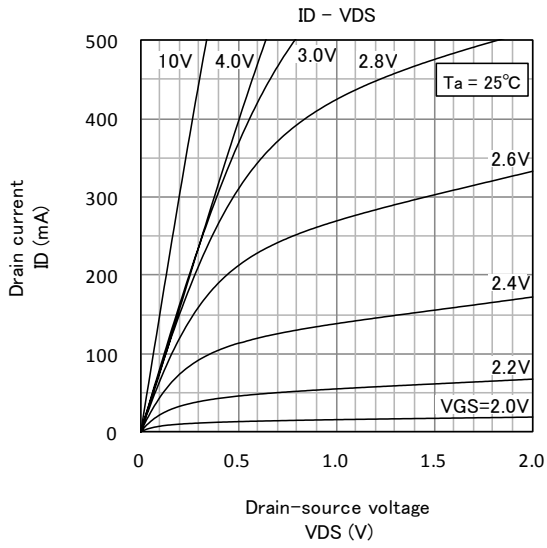
**Switching time test condition**



VDD=15V  
Duty ≤ 1%  
Input: tr, tf < 10ns  
Common source  
Ta=25°C

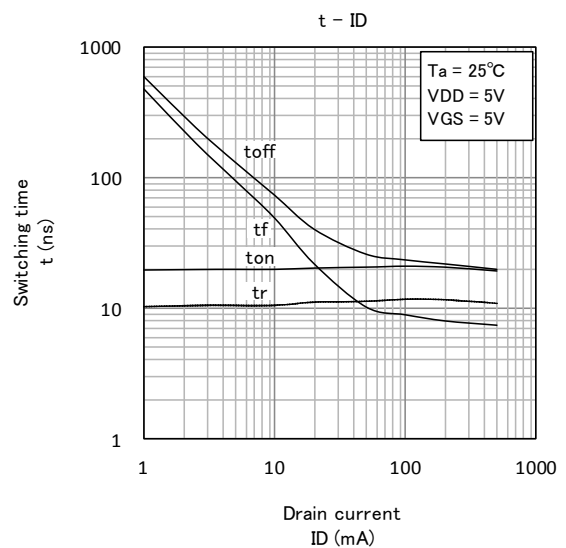
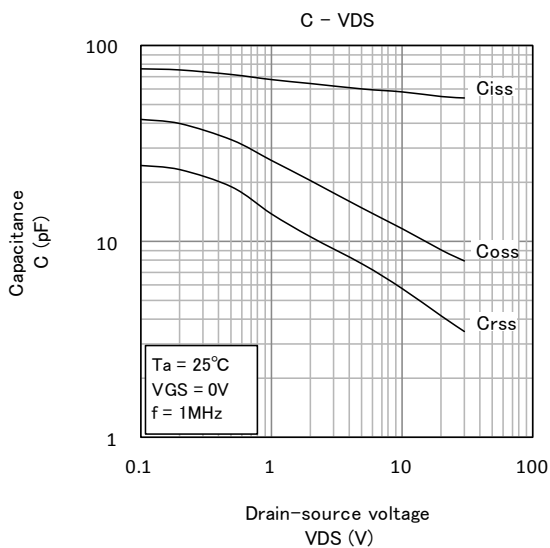
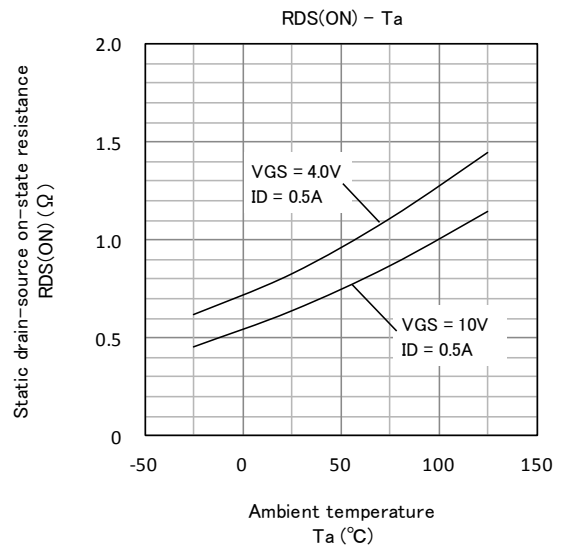
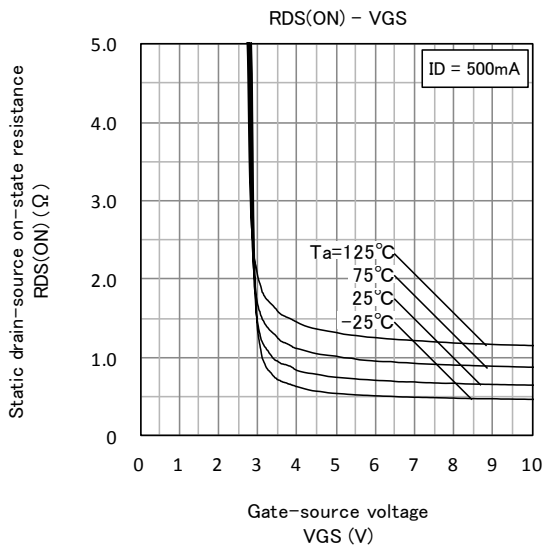
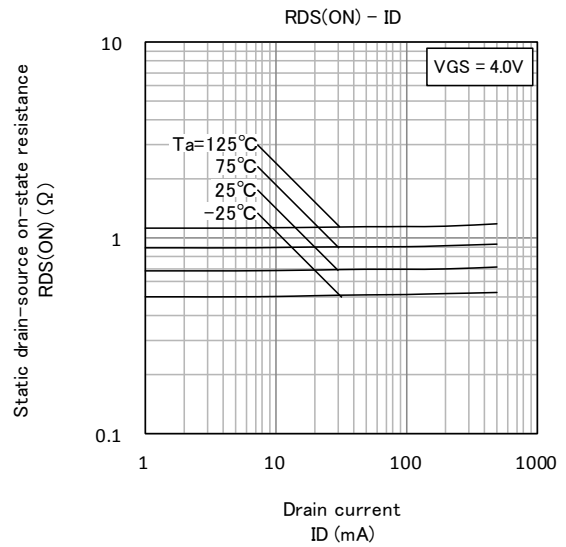
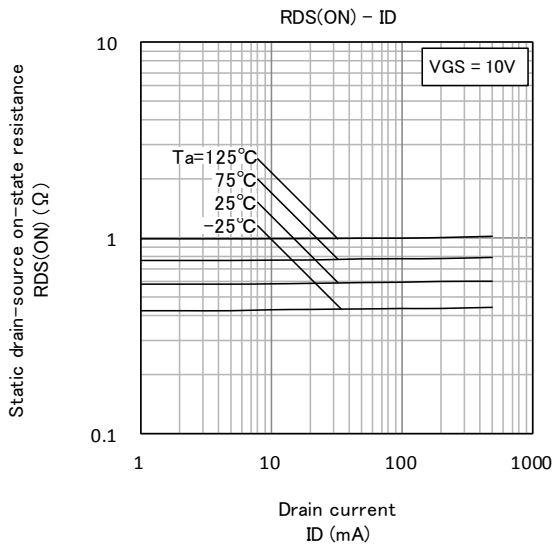


**TYPICAL CHARACTERISTICS**



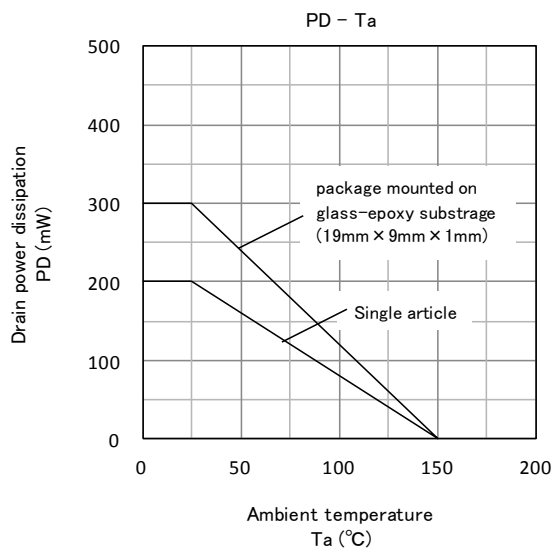
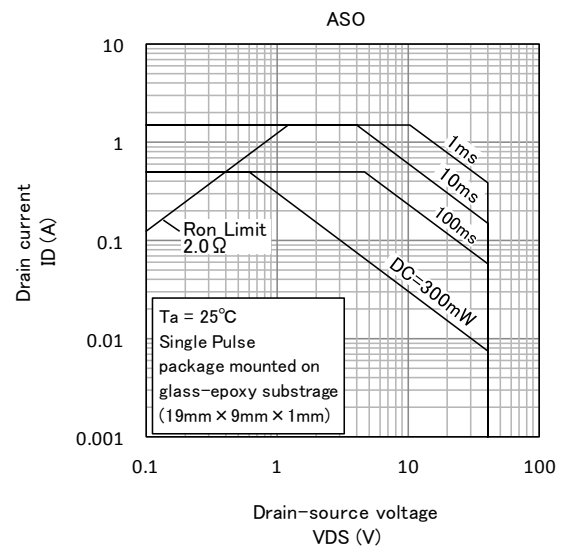
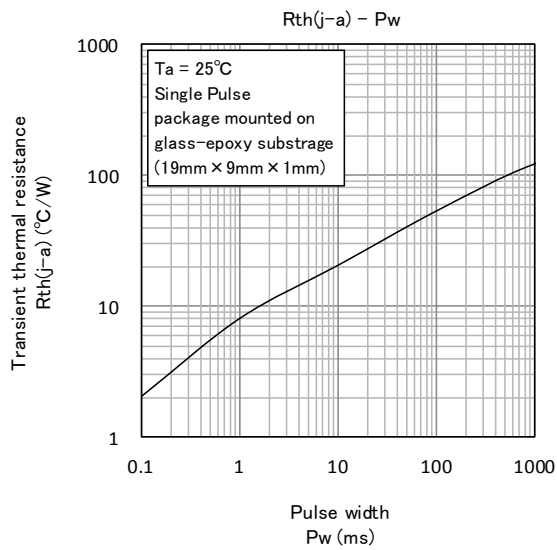
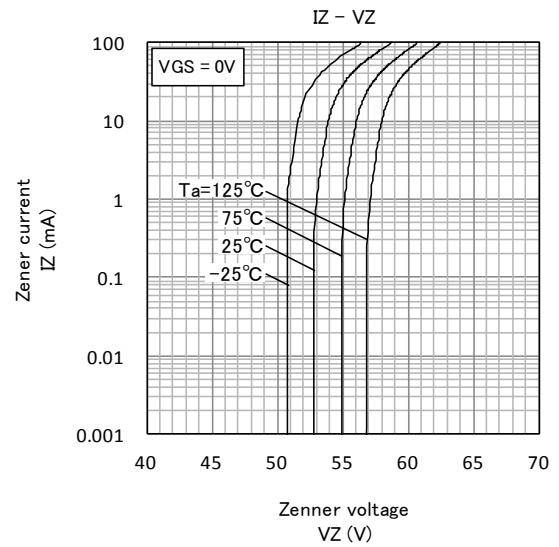
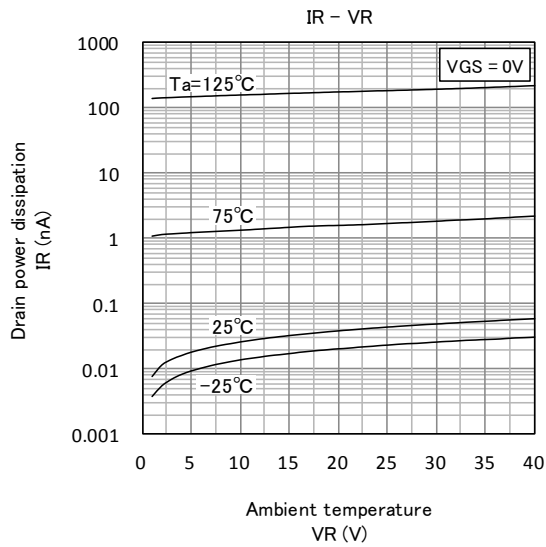
# INKE111AC1

Zener Diode built-in  
Silicon N-channel MOSFET



# INKE111AC1

Zener Diode built-in  
Silicon N-channel MOSFET





**Keep safety first in your circuit designs!**

·ISAHAYA Electronics Corporation puts the maximum effort into making semiconductor products better and more reliable, but there is always the possibility that trouble may occur with them. Trouble with semiconductors may lead to personal injury, fire or property damage. Remember to give due consideration to safety when making your circuit designs, with appropriate measures such as (1) placement of substitutive, auxiliary, (2) use of non-flammable material or (3) prevention against any malfunction or mishap.

**Notes regarding these materials**

- These materials are intended as a reference to our customers in the selection of the ISAHAYA products best suited to the customer's application; they don't convey any license under any intellectual property rights, or any other rights, belonging ISAHAYA or third party.
- ISAHAYA Electronics Corporation assumes no responsibility for any damage, or infringement of any third party's rights, originating in the use of any product data, diagrams, charts or circuit application examples contained in these materials.
- All information contained in these materials, including product data, diagrams and charts, represent information on products at the time of publication of these materials, and are subject to change by ISAHAYA Electronics Corporation without notice due to product improvements or other reasons. It is therefore recommended that customers contact ISAHAYA Electronics Corporation or an authorized ISAHAYA products distributor for the latest product information before purchasing product listed herein.
- ISAHAYA Electronics Corporation products are not designed or manufactured for use in a device or system that is used under circumstances in which human life is potentially at stake. Please contact ISAHAYA Electronics Corporation or an authorized ISAHAYA products distributor when considering the use of a product contained herein for any specific purposes, such as apparatus or systems for transportation, vehicular, medical, aerospace, nuclear, or undersea repeater use.
- The prior written approval of ISAHAYA Electronics Corporation is necessary to reprint or reproduce in whole or in part these materials.
- If these products or technologies are subject to the Japanese export control restrictions, they must be exported under a license from the Japanese government and cannot be imported into a country other than the approved destination. Any diversion or re-export contrary to the export control laws and regulations of Japan and/or the country of destination is prohibited.
- Please contact ISAHAYA Electronics Corporation or authorized ISAHAYA products distributor for further details on these materials or the products contained therein.